

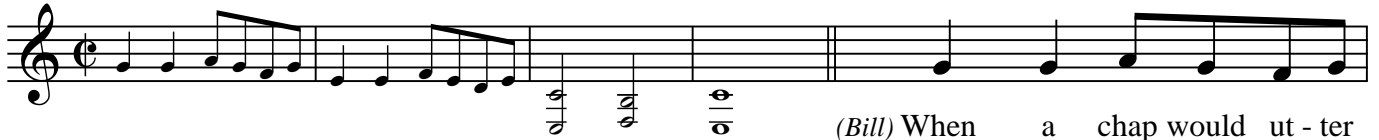
Blue Danube Blues

Words by
ANNE CALDWELL

(Bill and Rosemarie)

Music by
JEROME KERN

Moderato



(Bill) When a chap would ut-ter
(Rosemarie) Play - ing all a - lone, a



words that make him stut-ter to a girl-ie sweet, At her stare he's
kid of sev - en in the park a - cross the way, I thought I was



well a - ware that he has lots of hands and feet, Then some kind mu - si - cian
near - ing heav - en when the band be - gan to play. Ev - 'ry sweet and pret - ty



see - ing his po - si - tion soft - ly starts to play, His arm slips in haste
shop-girl in the cit - y danced there with her beau; Now my man I've found,



'Round her slen - der waist and quite bold - ly he'll say: "I'll be the
Mis - ter stick a - round; Since I met you I know I'll be the

Burthen *Liltingly*



Blu - est of the blue When I'm with-out you, The tru - est of the true;



I'll nev - er doubt you. How won - der - ful that you, With all the world from which to



choose, Se - lect - ed me to be the ap - ple of your eye! I can't re - sist you, And



that's the reas - on why I kissed you when the band was play - ing the

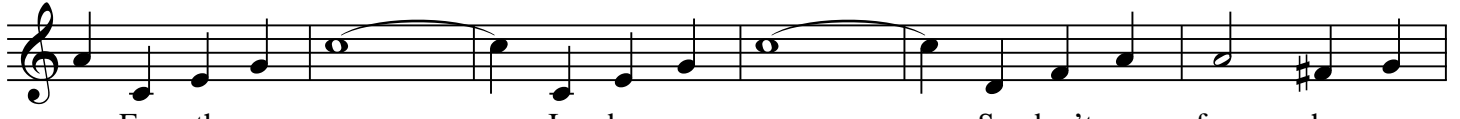
Blue Danube Blues



tune that sets you sway - ing: The Blue Dan - ube Blues. That sweet old strain _____



_____ we hear a - gain. _____ The Dan - ube Blue, _____ Each note rang true; _____



_____ For oth - er ears _____ In by - gone years. _____ So don't re - fuse when we



choose play the old Blue Dan - ube Blues! I'll be the blu - est of the blue _____



_____ When I'm with - out you; The tru - est of the true, _____ I'll nev - er doubt you. How



won - der - ful that you _____ With all the world from which to choose _____



_____ Se - lect - ed me to be the ap - ple of your eye! _____ I can't re - sist you And



that's the reas - on why _____ I kissed you When the band was play - ing The



tune that sets you sway - ing: The Blue Dan - ube Blues."