

I Know That I'm in Love


Lyric by
SIDNEY D. MITCHELL

Music by
LEW POLLACK and
ALFRED GOODMAN


Valse Moderato



I used to feel Love was - n't real
One lit - tle smile Gone in a while



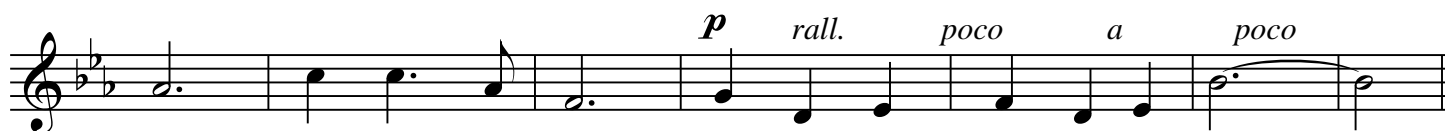
Un - til some - one came a - long. _____ Then I found out Be - yond a
Gave you a hope that is new. _____ So may a vow If tak - en



doubt My first im - pres - sion was wrong. _____ I caught by chance
now Bring soul sal - va - tion to you. _____ Love is the light



One fleet - ing glance From eyes with love - light a - glow. _____ I can't for -
That leads you right When you are drift - ing a - bout. _____ Fol - low its



get, It lin - gers yet, Al - ways wher - ev - er I go. _____
ray Each night and day You will be saved, nev - er doubt. _____

CHORUS



I know that I'm in love For all I'm think-ing of Is some-one who



once smiled at me._____ Why e - ven when I dream The same lips al-ways



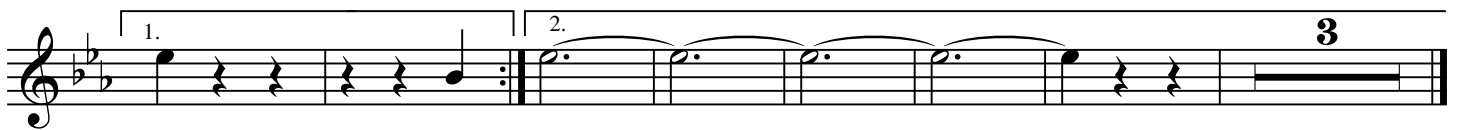
seem Be - guil-ing and smil-ing so sweet-ly._____ The same two eyes di - vine That



once smiled in - to mine Keep shin - ing from the stars a - bove._____ My



joy will be com - plete When once a-gain we meet— Oh, I know that I'm in



love. I love._____