

# Forever Love, Forever

from the operetta *Sylvia*

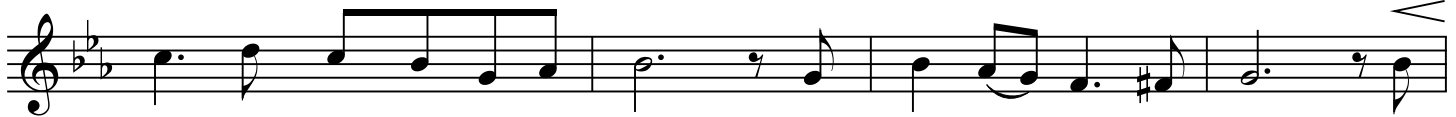
MAUDE ELIZABETH INCH

W. RHYS-HERBERT

**Andante con moto**



There  
The



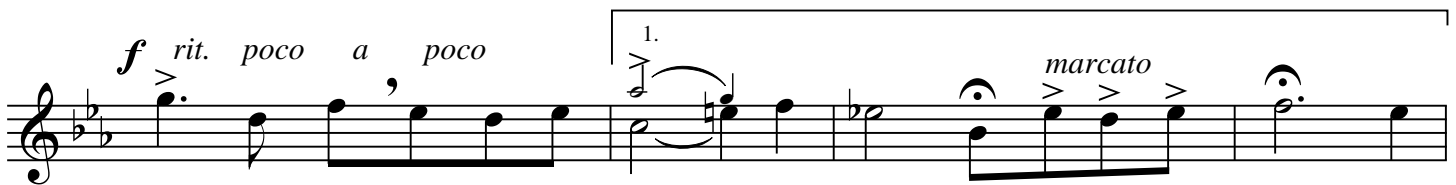
is a name deep in my heart, Which long I gave to you. And  
stars them-selves can - not con - ceive A sweet - er name than this. And



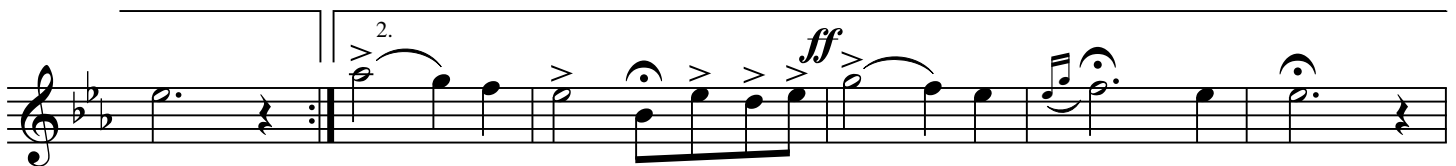
though as old as is the world 'Tis yet, be - lieve me, new. The  
yet they hear the an - gels sing, Whose ev - 'ry word is bliss. In



name is small and yet it spans, It spans the globe from pole to pole, 'Tis  
course of time, so runs the world, All souls re - turn, re - turn a - bove, But



wide as heaven and grand - er far Than o - cean, than o - cean's cease - less  
ah, till then, my faith - ful



roll. soul, will ev - er, will ev - er call you, call you Love.

